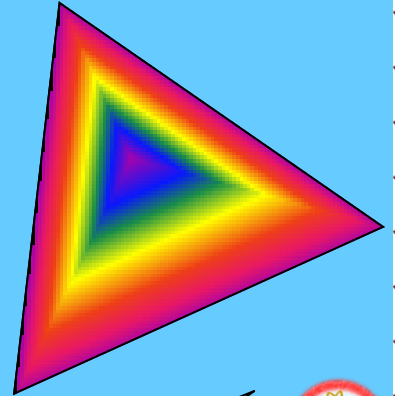
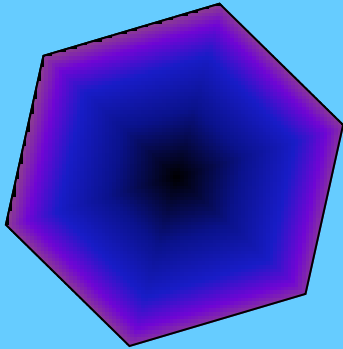
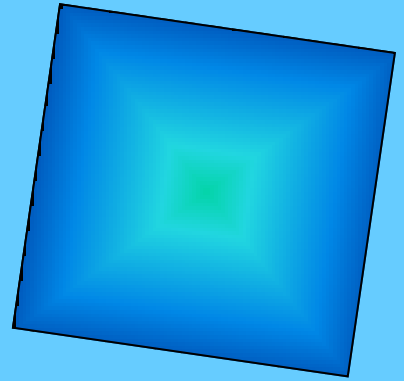
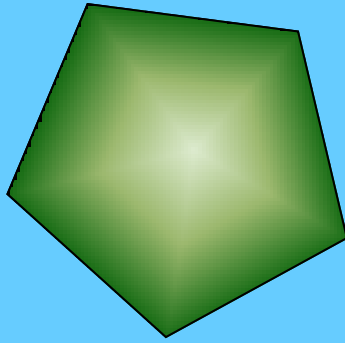


Regular Award

Regular polygons (2D shapes) have all sides and angles the same.

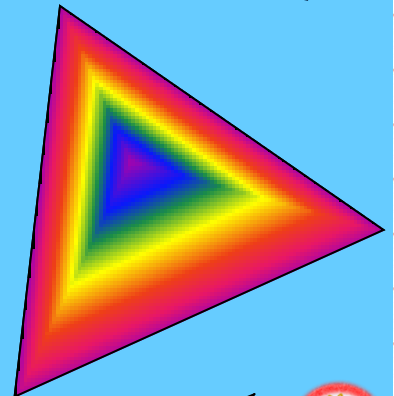
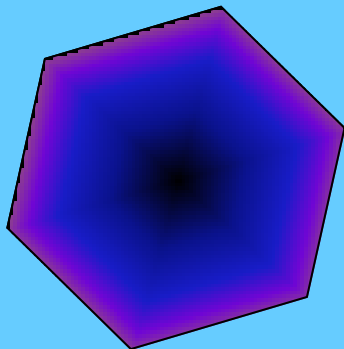
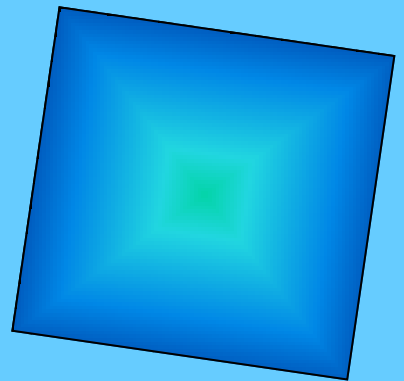
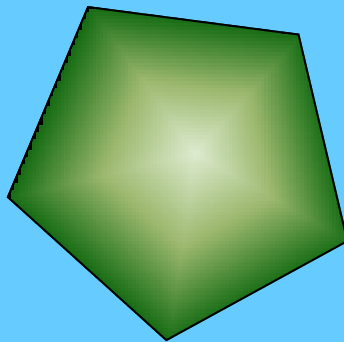


1 got his/her **FIRST** certificate!!!



Regular Award

Regular polygons (2D shapes) have all sides and angles the same.

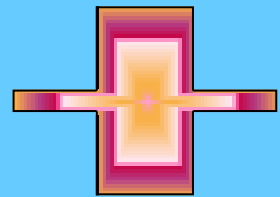
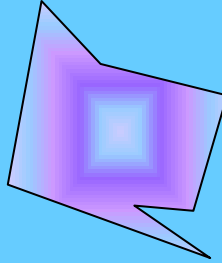
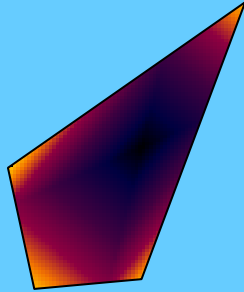
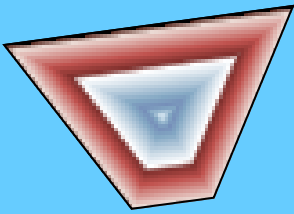
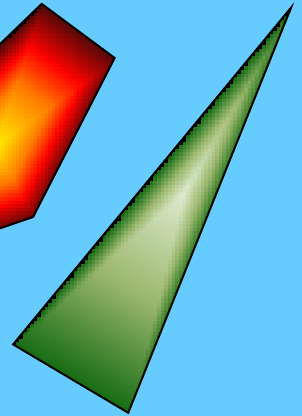
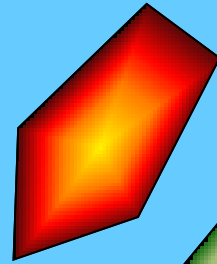
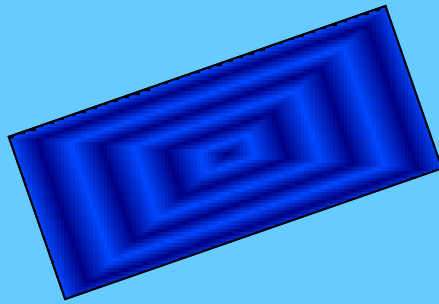


1 got his/her **FIRST** certificate!!!



Irregular Award

Irregular polygons (2D shapes) have at least one side a different length than the others.



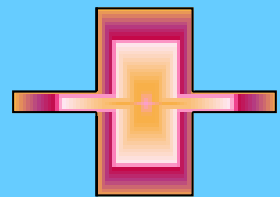
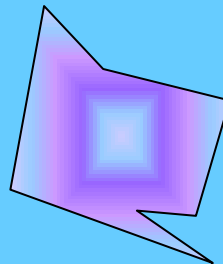
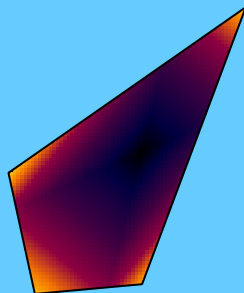
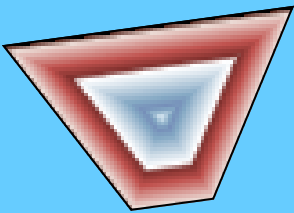
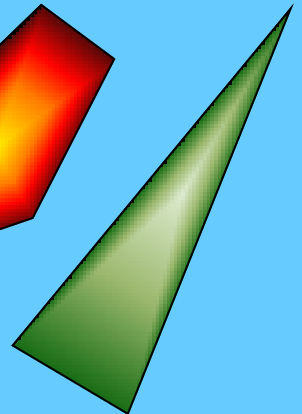
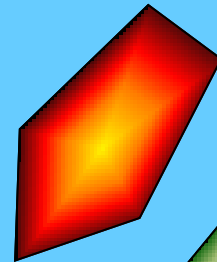
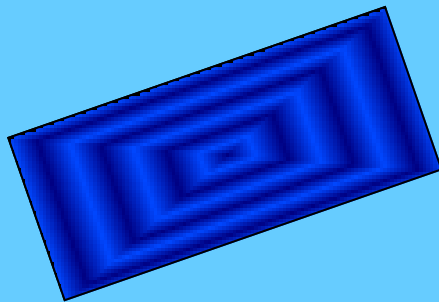
© 2012 PrimaryClass.co.uk

2 got his/her **SECOND** certificate!!!



Irregular Award

Irregular polygons (2D shapes) have at least one side a different length than the others.



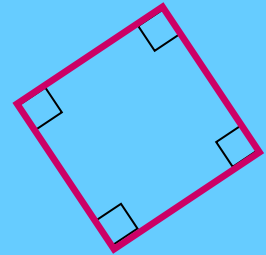
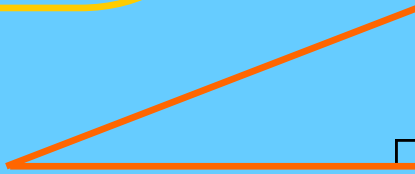
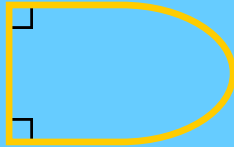
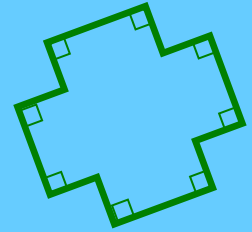
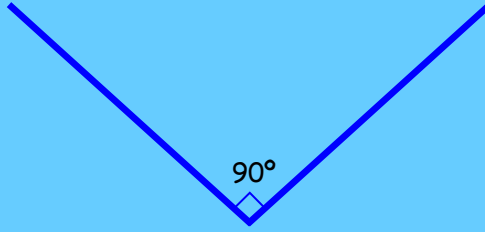
© 2012 PrimaryClass.co.uk

2 got his/her **SECOND** certificate!!!



Right Angle Award

A right angle has 90° . It is a quarter of a turn because a whole turn is 360° . You can measure it by using a protractor or the corner of a piece of paper. You show a right angle by using a square in the angle.

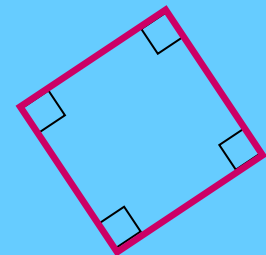
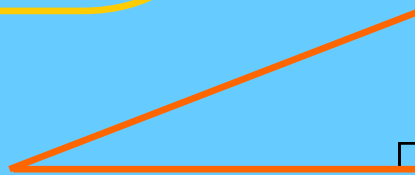
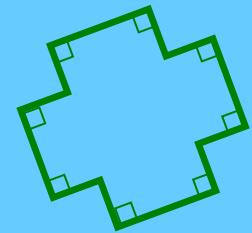
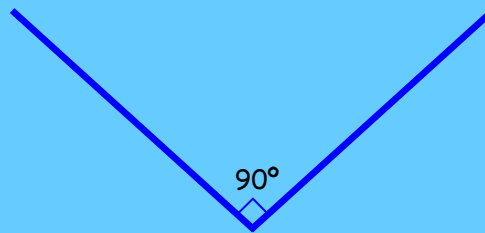


3 got his/her **THIRD** certificate!!!



Right Angle Award

A right angle has 90° . It is a quarter of a turn because a whole turn is 360° . You can measure it by using a protractor or the corner of a piece of paper. You show a right angle by using a square in the angle.

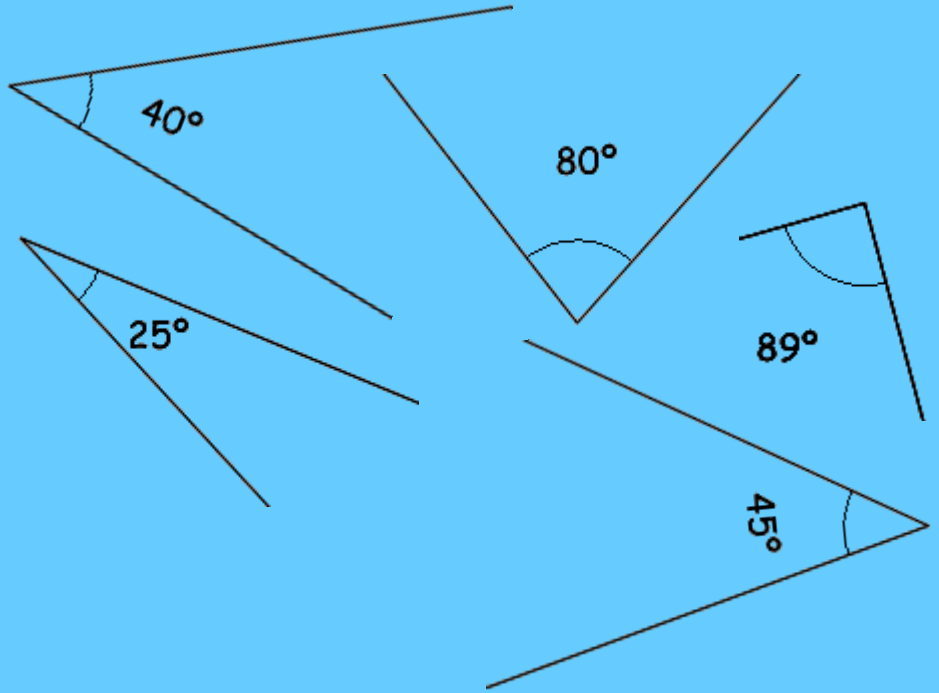


3 got his/her **THIRD** certificate!!!



Acute Angle Award

An acute angle is an angle with less than 90° .



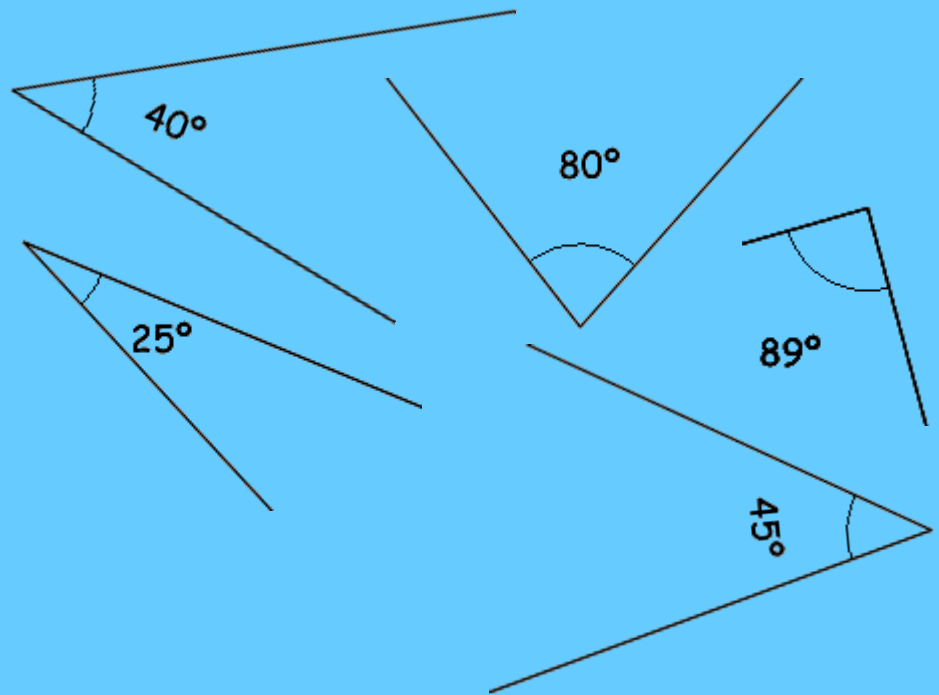
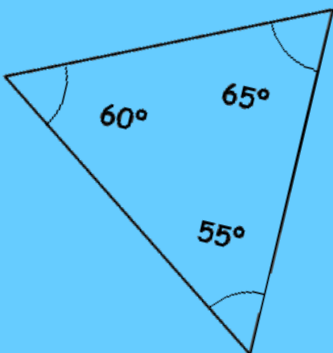
© 2012 PrimaryClass.co.uk

4 got his/her **FOURTH** certificate!!!



Acute Angle Award

An acute angle is an angle with less than 90° .



© 2012 PrimaryClass.co.uk

4 got his/her **FOURTH** certificate!!!



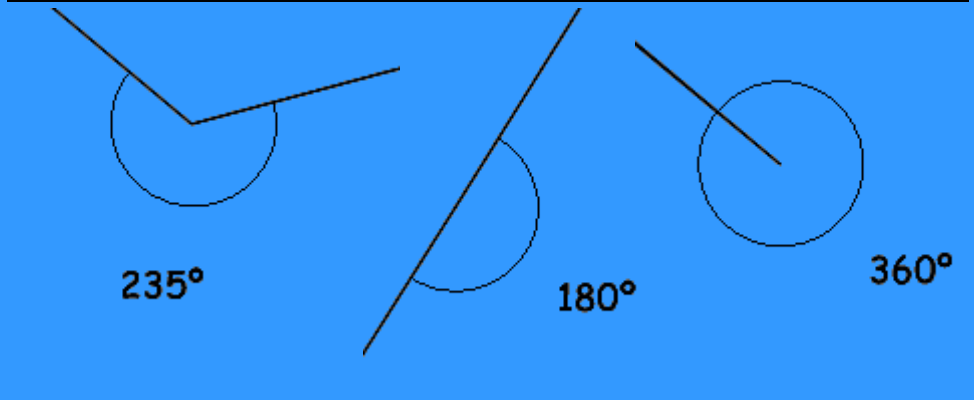
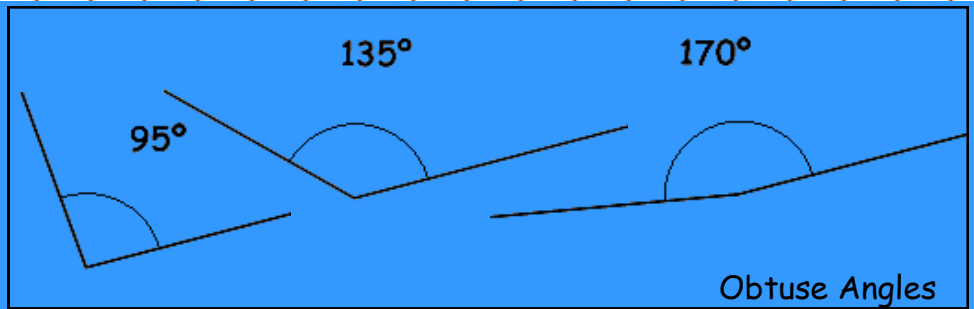
Other Angles Award

An obtuse angle is an angle that is between 91° and 179° .

Reflex angles can be between 181° and 359° .

A straight line is 180° .

A full turn is 360° .



© 2012 PrimaryClass.co.uk

5 got his/her **FIFTH** certificate!!!



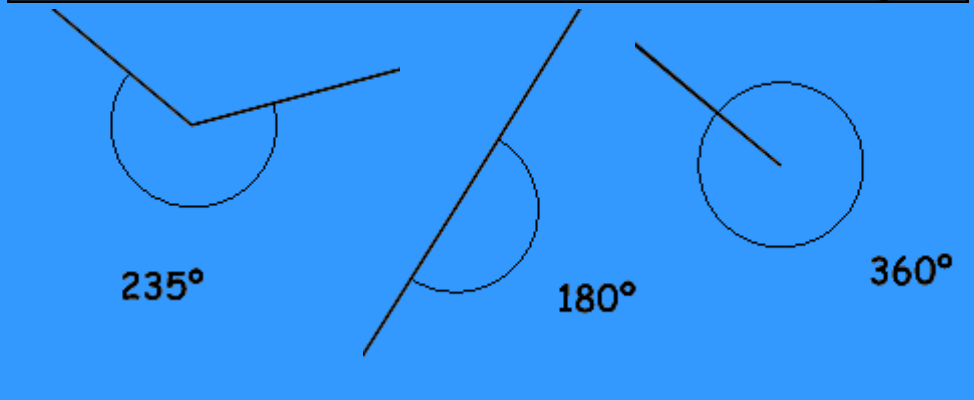
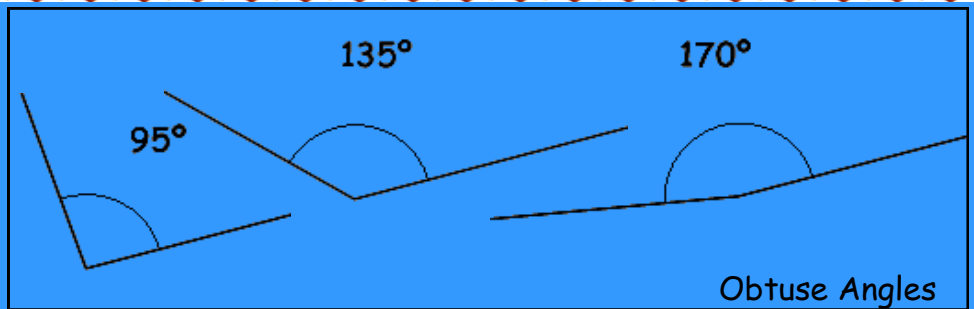
Other Angles Award

An obtuse angle is an angle that is between 91° and 179° .

Reflex angles can be between 181° and 359° .

A straight line is 180° .

A full turn is 360° .



© 2012 PrimaryClass.co.uk

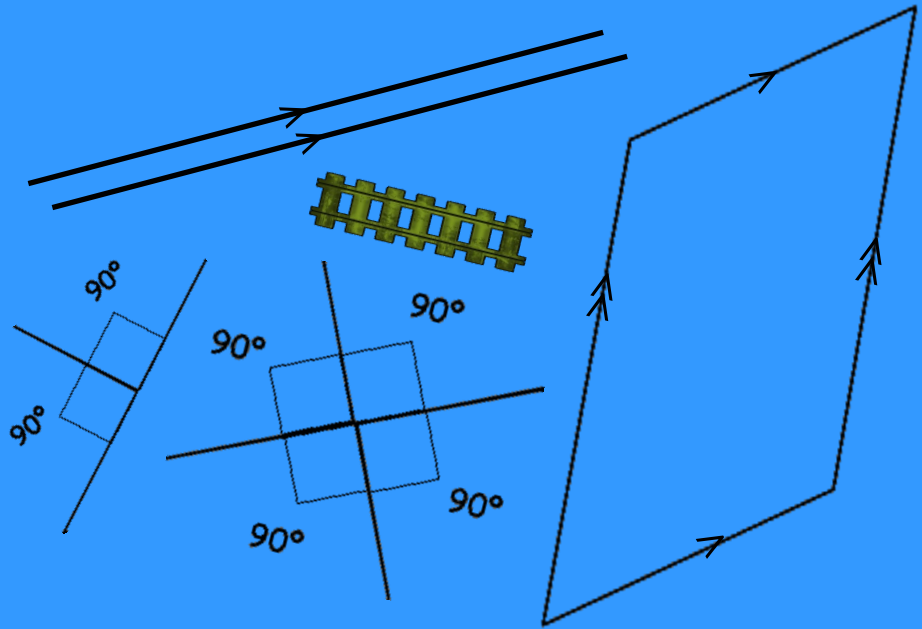
5 got his/her **FIFTH** certificate!!!



Parallel Award

Parallel lines run next to each other and are always the same distance apart. No matter how long they are, they will never cross. They are often shown by the > sign.

Perpendicular lines always meet or cross at 90° .



© 2012 PrimaryClass.co.uk

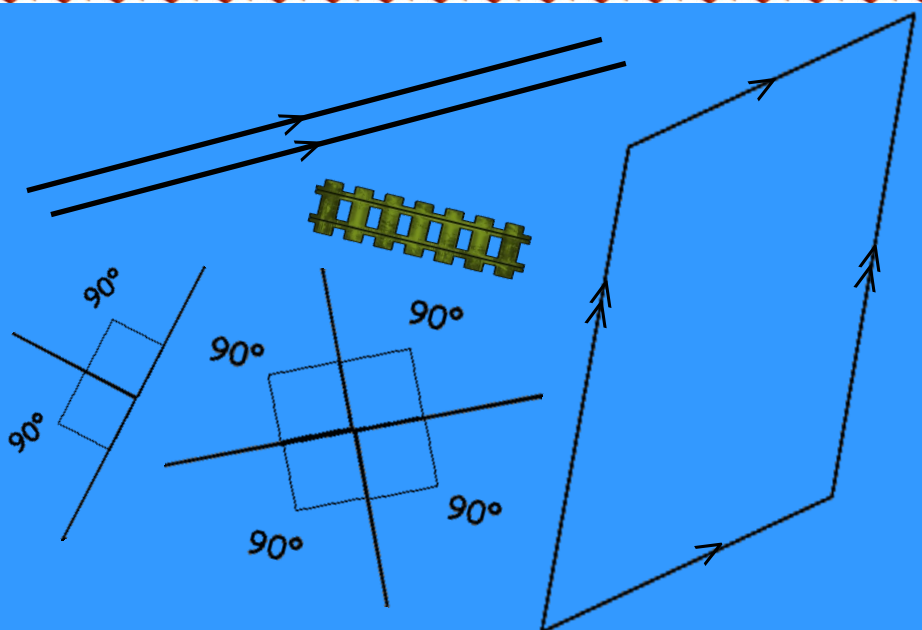
6 got his/her **SIXTH** certificate!!!



Parallel Award

Parallel lines run next to each other and are always the same distance apart. No matter how long they are, they will never cross. They are often shown by the > sign.

Perpendicular lines always meet or cross at 90° .



© 2012 PrimaryClass.co.uk

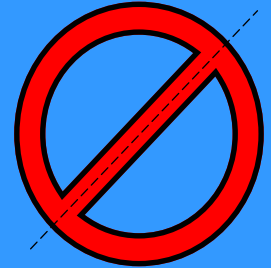
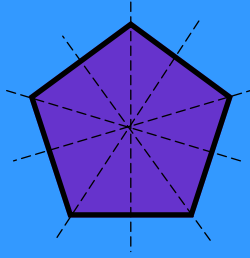
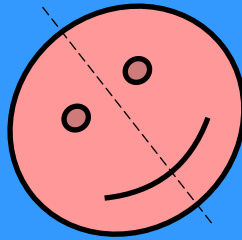
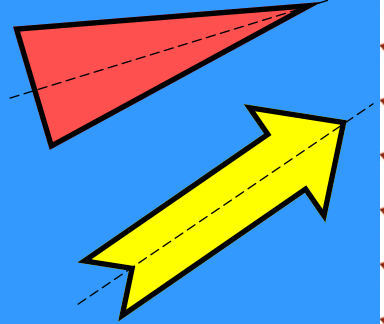
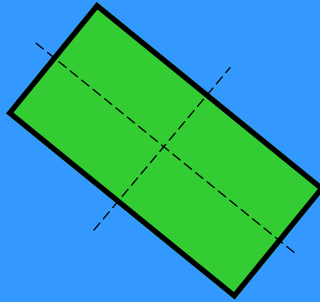
6 got his/her **SIXTH** certificate!!!



Symmetry Award

A polygon has reflective symmetry if one half is the mirror image of the other half.

Some polygons can have many lines of symmetry. This is called rotational symmetry.



© 2012 PrimaryClass.co.uk

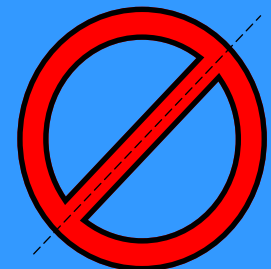
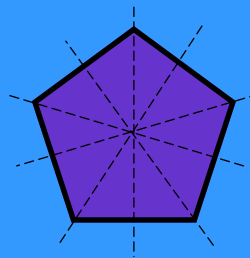
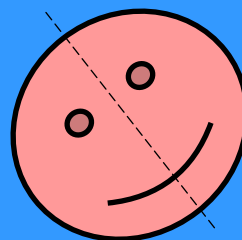
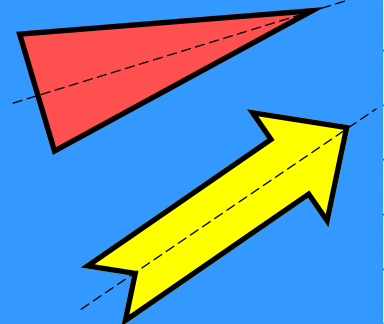
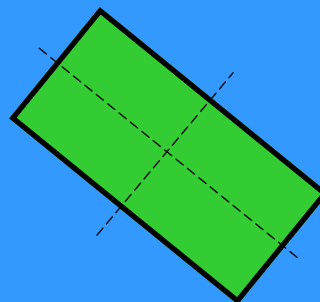
7 got his/her SEVENTH certificate!!!



Symmetry Award

A shape has reflective symmetry if one half is the mirror image of the other half.

Some shapes can have many lines of symmetry. This is called rotational symmetry.



© 2012 PrimaryClass.co.uk

7 got his/her SEVENTH certificate!!!



Triangle Award

Triangles are polygons with 3 angles and 3 sides. When you add their angles, it always makes 180° .

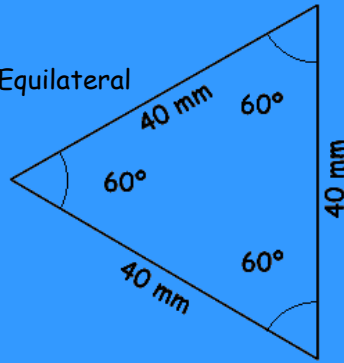
Equilateral triangles have all sides the same length, and all angles 60° .

Isosceles triangles have 2 angles and sides the same.

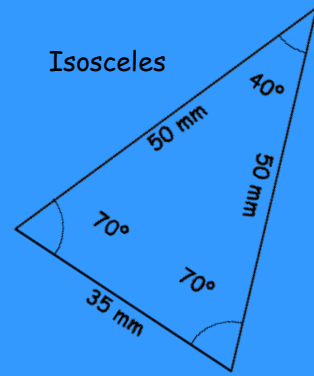
Scalene triangles have all sides and angles different.

A right angle triangle will have 1 right angle in it.

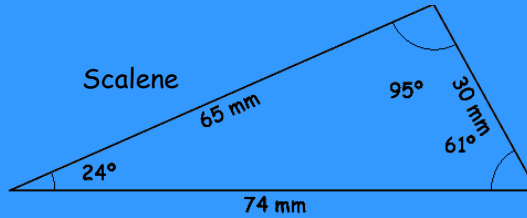
Equilateral



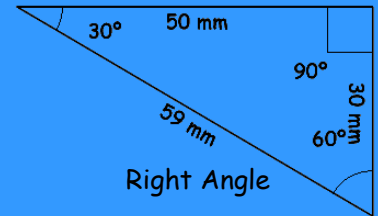
Isosceles



Scalene



Right Angle



© 2012 PrimaryClass.co.uk



8 got his/her **EIGHTH** certificate!!!

Triangle Award

Triangles are polygons with 3 angles and 3 sides. When you add their angles, it always makes 180° .

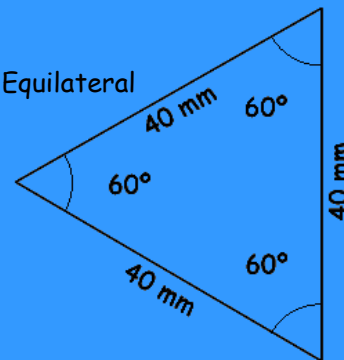
Equilateral triangles have all sides the same length, and all angles 60° .

Isosceles triangles have 2 angles and sides the same.

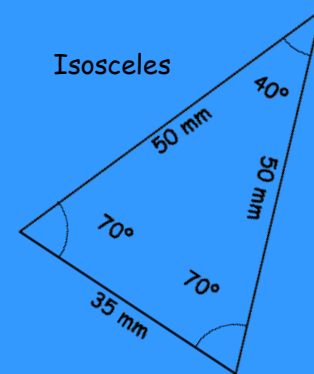
Scalene triangles have all sides and angles different.

A right angle triangle will have 1 right angle in it.

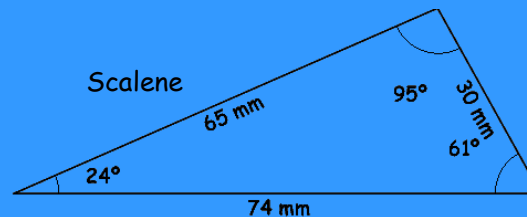
Equilateral



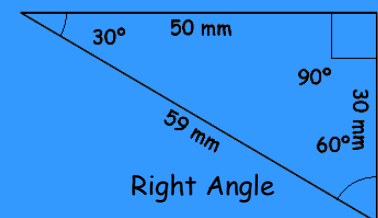
Isosceles



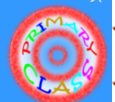
Scalene



Right Angle



© 2012 PrimaryClass.co.uk



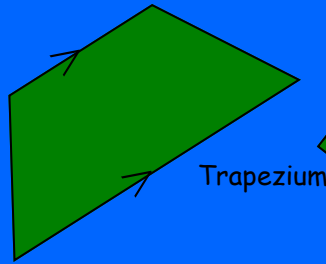
8 got his/her **EIGHTH** certificate!!!

Quadrilateral Award

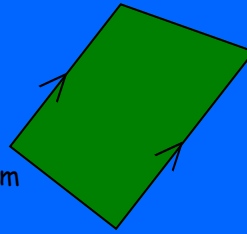
Quadrilaterals are polygons with 4 sides. There are many special quadrilaterals.

Rectangles have 4 right angles, opposite sides equal length and 2 pairs of parallel lines. A square has all this, but are regular.

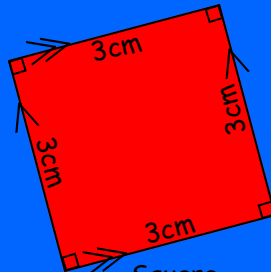
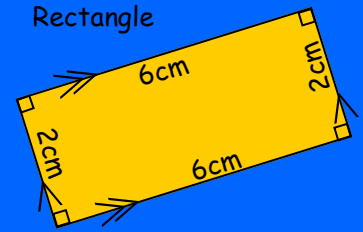
A trapezium has 1 pair of parallel lines, and parallelogram 2 pairs. A rhombus is a parallelogram that is regular.



Trapezium

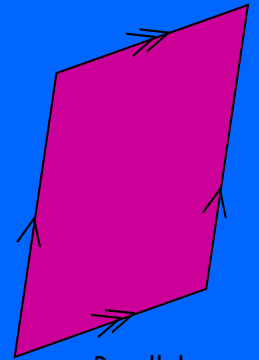
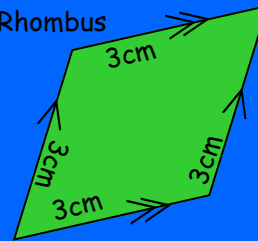


Rectangle



Square

Rhombus



Parallelogram

9 got his/her NINTH certificate!!!

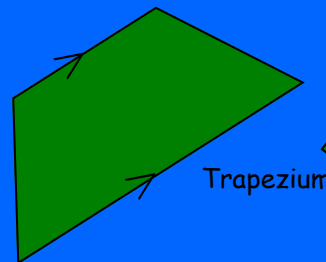


Quadrilateral Award

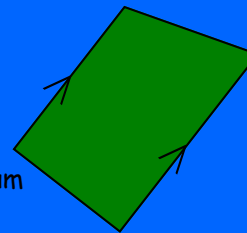
Quadrilaterals are polygons with 4 sides. There are many special quadrilaterals.

Rectangles have 4 right angles, opposite sides equal length and 2 pairs of parallel lines. A square has all this, but are regular.

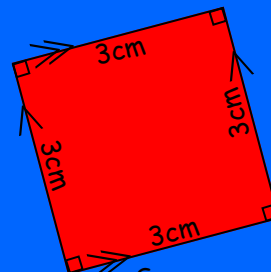
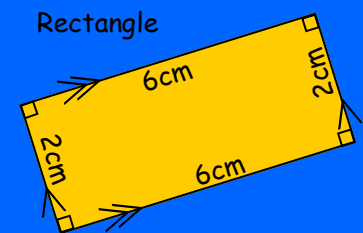
A trapezium has 1 pair of parallel lines, and parallelogram 2 pairs. A rhombus is a parallelogram that is regular.



Trapezium

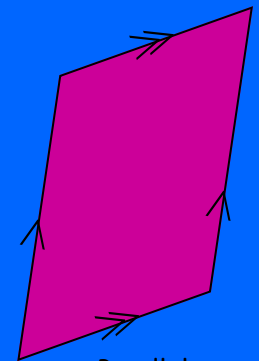
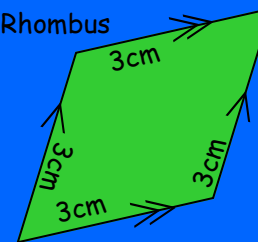


Rectangle



Square

Rhombus



Parallelogram

9 got his/her NINTH certificate!!!

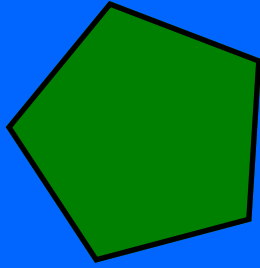


Pentagon Award

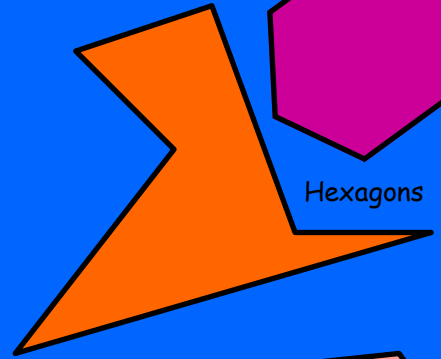
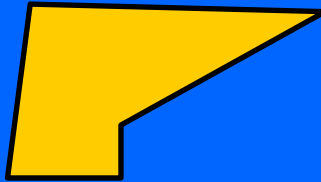
Pentagons are any 2D polygon with 5 sides

Hexagons have 6 sides.

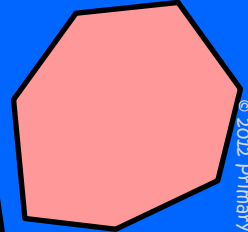
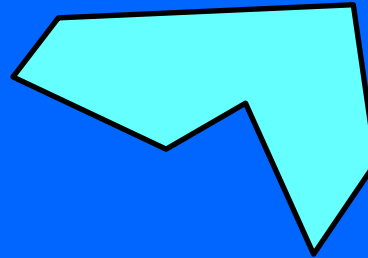
Septagons have 7 sides, and may also be called heptagons.



Pentagons



Hexagons



Septagons

10 got his/her **MENWH** certificate!!!



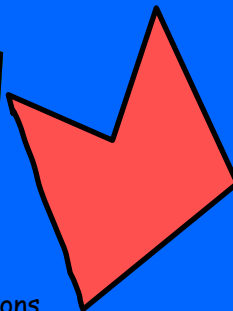
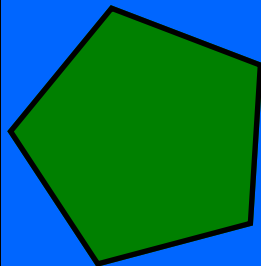
© 2012 PrimaryClass.co.uk

Pentagon Award

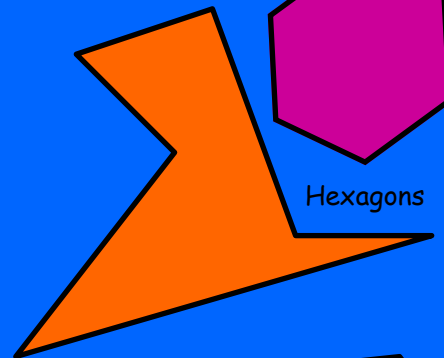
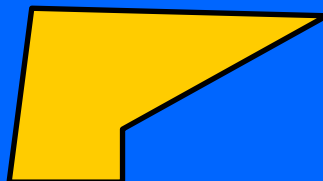
Pentagons are any 2D polygon with 5 sides

Hexagons have 6 sides.

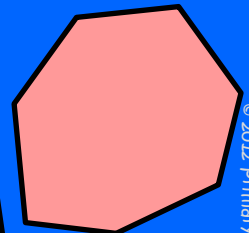
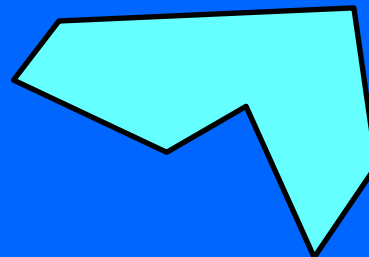
Septagons have 7 sides, and may also be called heptagons.



Pentagons



Hexagons



Septagons

10 got his/her **MENWH** certificate!!!



© 2012 PrimaryClass.co.uk

3D Award

1 dimension is just like a straight line.

2 dimensions mean you have height and width.

3 dimensions mean you have height, width and depth.

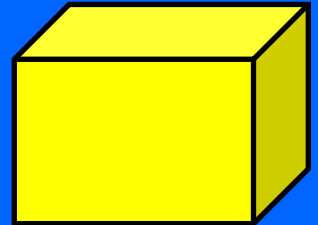
Often with 3D shapes, a line is called an edge. A corner is a vertex (vertices), and the flat part is the face.



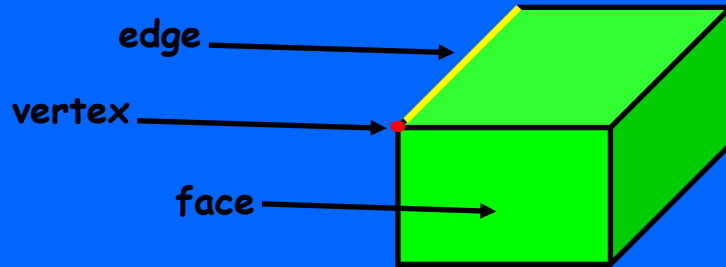
1 dimension



2 dimensions



3 dimensions



12 got his/her **WELTH** certificate!!!



3D Award

1 dimension is just like a straight line.

2 dimensions mean you have height and width.

3 dimensions mean you have height, width and depth.

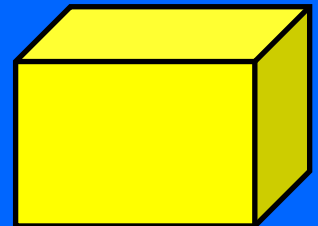
Often with 3D shapes, a line is called an edge. A corner is a vertex (vertices), and the flat part is the face.



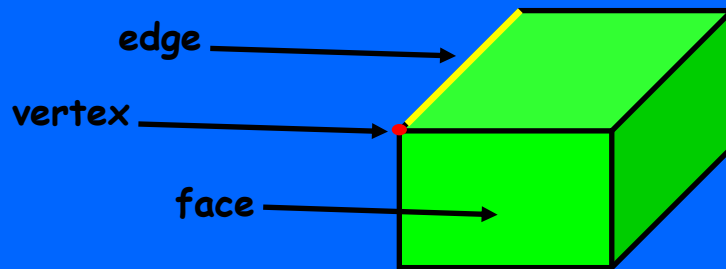
1 dimension



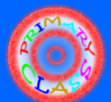
2 dimensions



3 dimensions



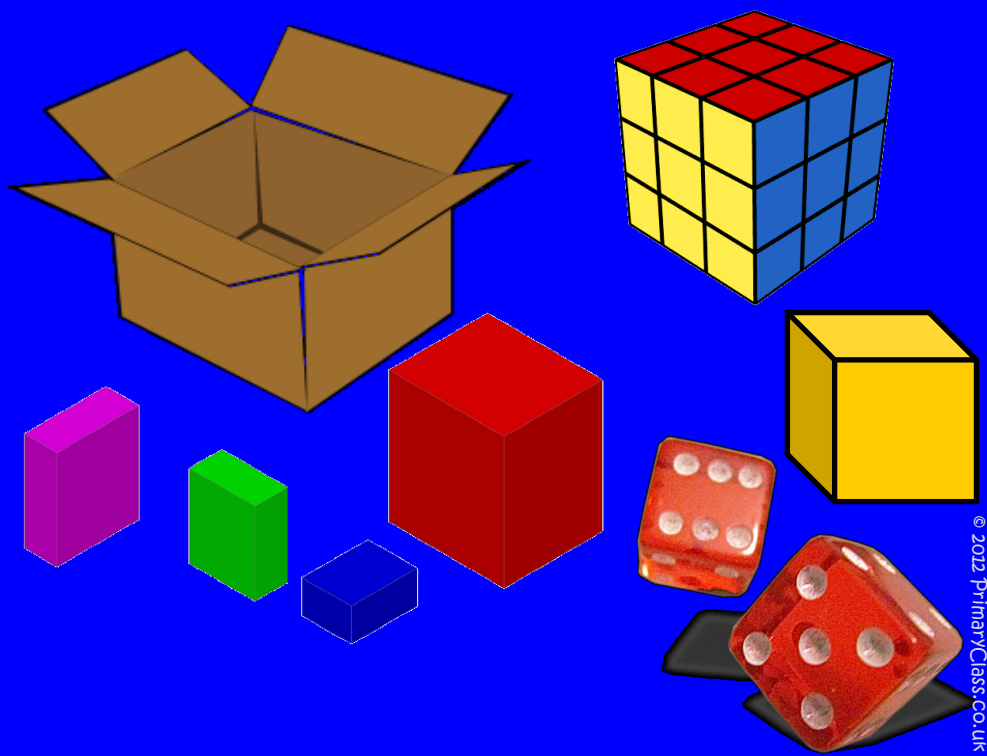
12 got his/her **WELTH** certificate!!!



Cuboid Award

Cuboids have 6 faces that are all rectangular. Therefore all the vertices are at right angles.

A cube is a special type of cuboid as each face is a square (which is a special type of rectangle).



© 2012 PrimaryClass.co.uk

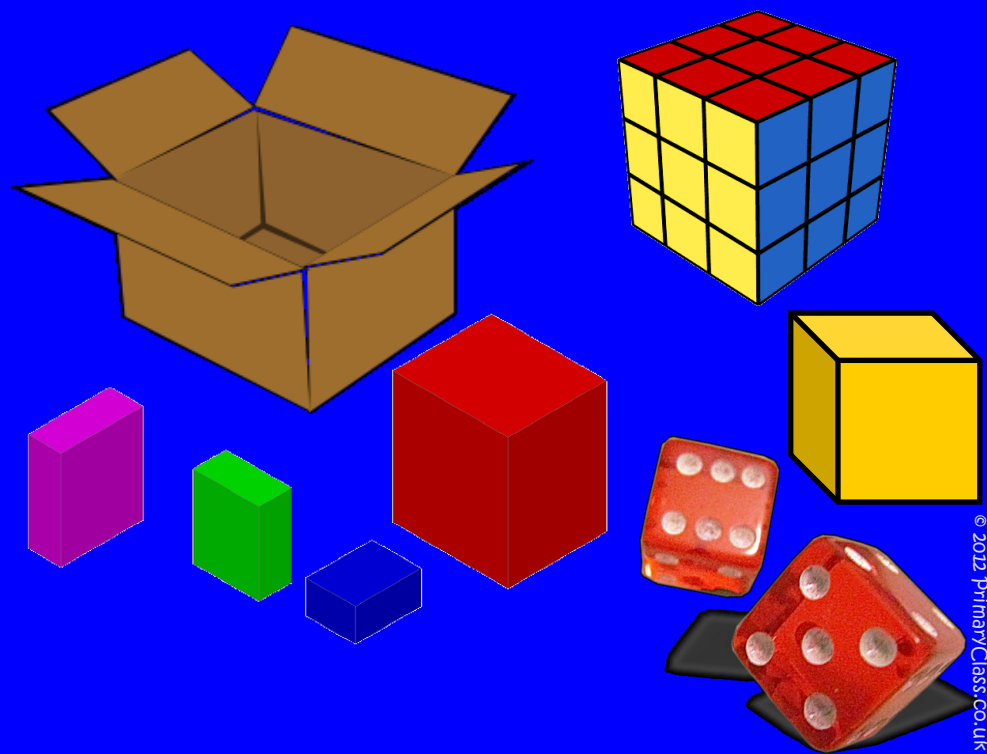
14 got his/her **FOURTEENTH** certificate!!!



Cuboid Award

Cuboids have 6 faces that are all rectangular. Therefore all the vertices are at right angles.

A cube is a special type of cuboid as each face is a square (which is a special type of rectangle).



© 2012 PrimaryClass.co.uk

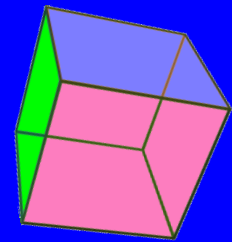
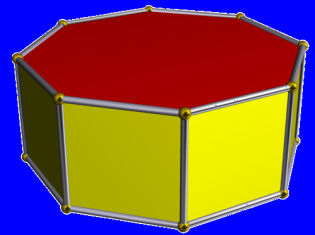
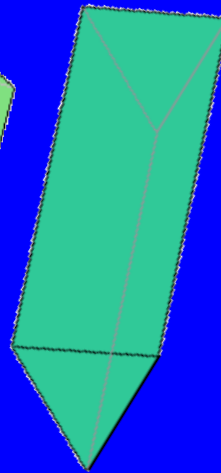
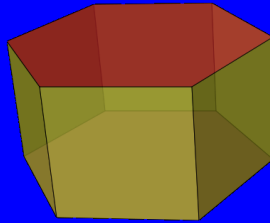
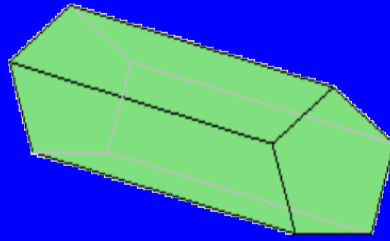
14 got his/her **FOURTEENTH** certificate!!!



Prism Award

Prisms are 3D shapes that have the same 2D shape at both ends. Prisms do not have curved faces.

The name of the 2D shape helps name the prism. For example, if the shape at both ends are triangles, the 3D shape is called a Triangular Prism.



© 2012 PrimaryClass.co.uk

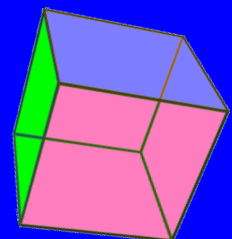
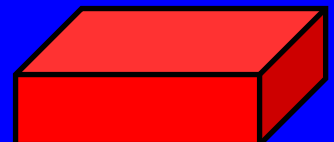
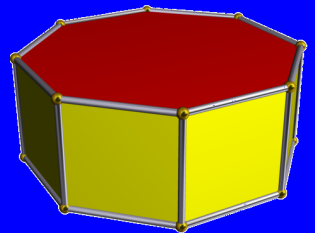
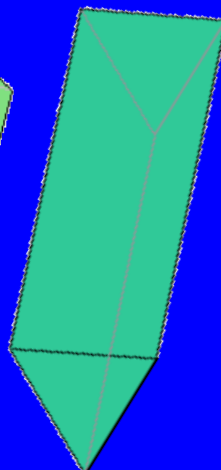
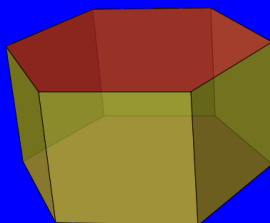
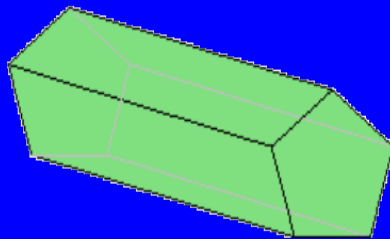
15 got his/her **FIFTEENTH** certificate!!!



Prism Award

Prisms are 3D shapes that have the same 2D shape at both ends. Prisms do not have curved faces.

The name of the 2D shape helps name the prism. For example, if the shape at both ends are triangles, the 3D shape is called a Triangular Prism.



© 2012 PrimaryClass.co.uk

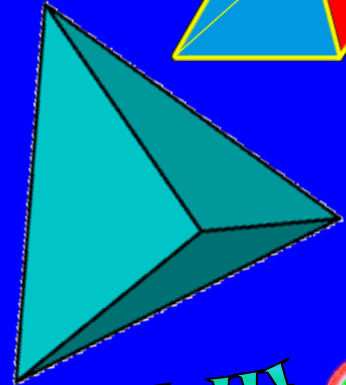
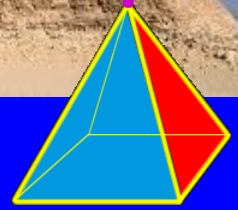
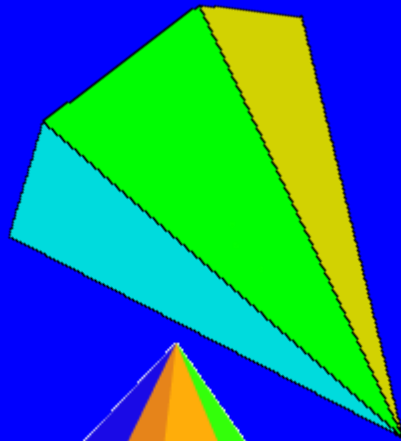
15 got his/her **FIFTEENTH** certificate!!!



Pyramid Award

Pyramids have a 2D shape at its base, but unlike prisms, the other end meets at one point or vertex.

Like prisms, the shape of the 2D shape helps name it. For example, if the base is a square, then it is called a Square Based Pyramid.



© 2012 PrimaryClass.co.uk

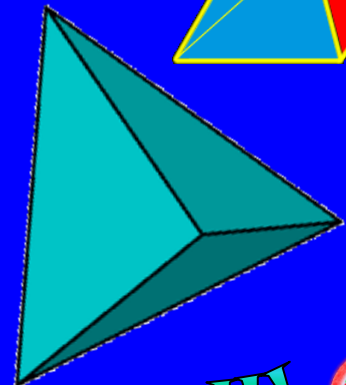
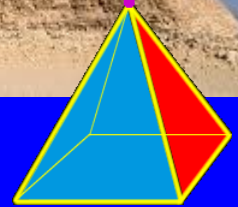
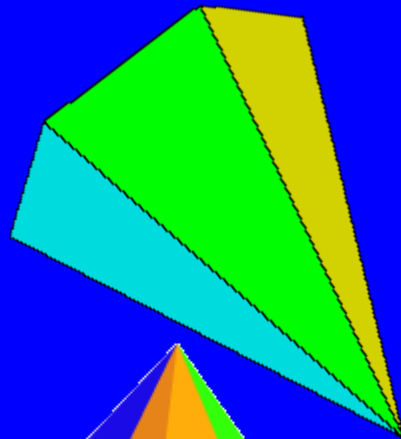


16 got his/her **SIXTEENTH** certificate!!!

Pyramid Award

Pyramids have a 2D shape at its base, but unlike prisms, the other end meets at one point or vertex.

Like prisms, the shape of the 2D shape helps name it. For example, if the base is a square, then it is called a Square Based Pyramid.



© 2012 PrimaryClass.co.uk

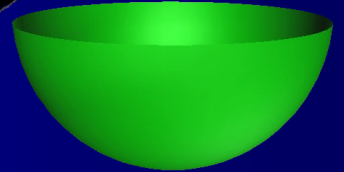
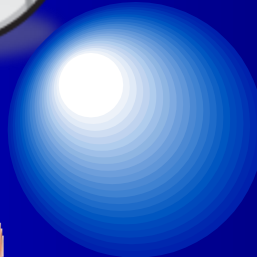
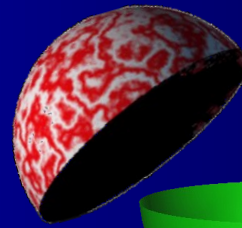


16 got his/her **SIXTEENTH** certificate!!!

Sphere Award

A sphere is 3D shape that has no vertices or edges, just one curved face that is always equal distance from the centre.

A hemisphere is half of a sphere. It may also be called a semisphere.



© 2012 PrimaryClass.co.uk

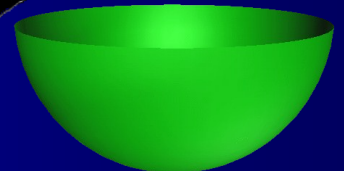
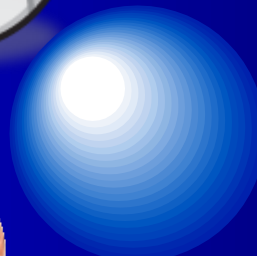
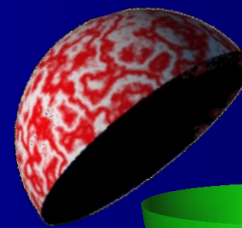
17 got his/her SEVENTEENTH certificate!!!



Sphere Award

A sphere is 3D shape that has no vertices or edges, just one curved face that is always equal distance from the centre.

A hemisphere is half of a sphere. It may also be called a semisphere.



© 2012 PrimaryClass.co.uk

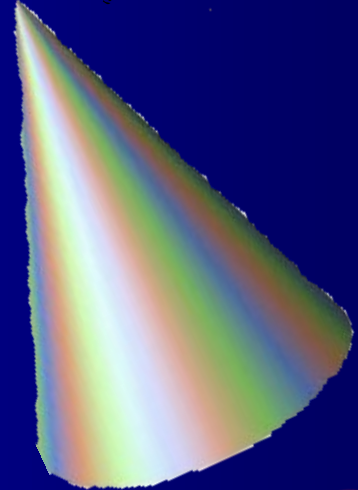
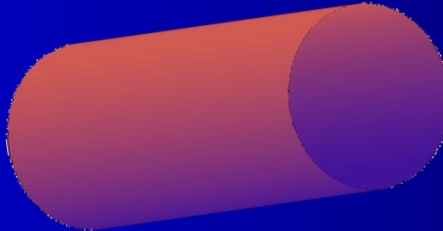
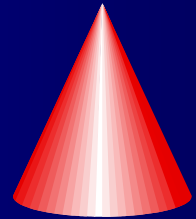
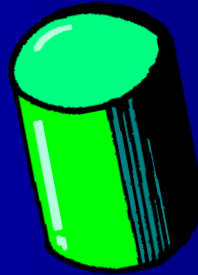
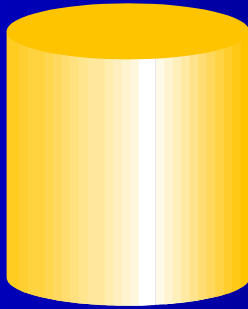
17 got his/her SEVENTEENTH certificate!!!



Cylinder Award

A cylinder is a 3D shape with 2 identical circular ends. It is not a prism as prisms do not have curved faces.

Cones are the only shape with just one vertex. There are 2 faces, one curved and one flat. The flat face is circular.



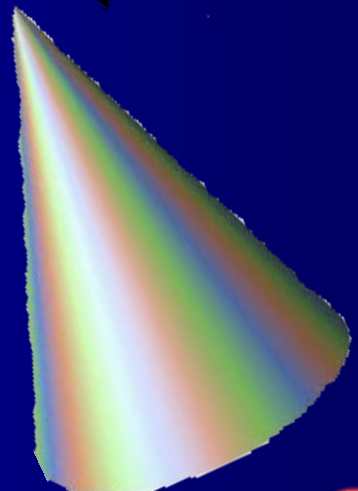
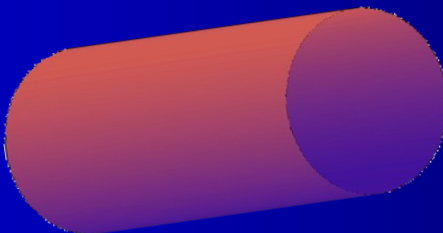
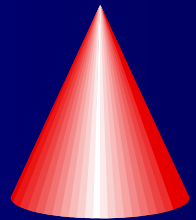
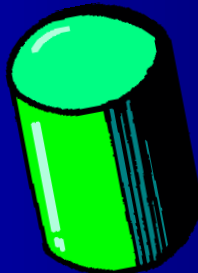
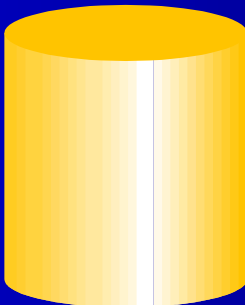
18 got his/her **EIGHTEENTH** certificate!!!



Cylinder Award

A cylinder is a 3D shape with 2 identical circular ends. It is not a prism as prisms do not have curved faces.

Cones are the only shape with just one vertex. There are 2 faces, one curved and one flat. The flat face is circular.



18 got his/her **EIGHTEENTH** certificate!!!

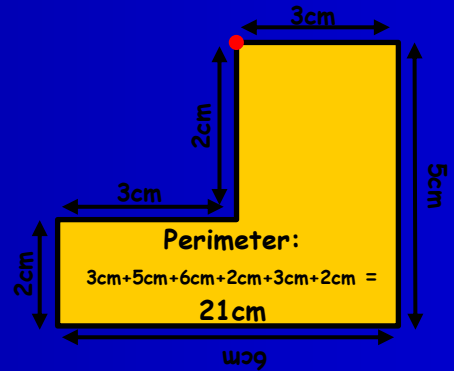
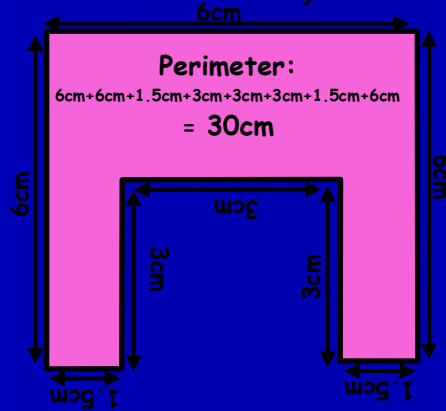
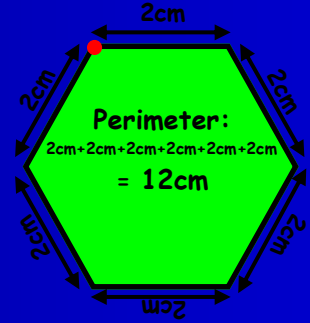
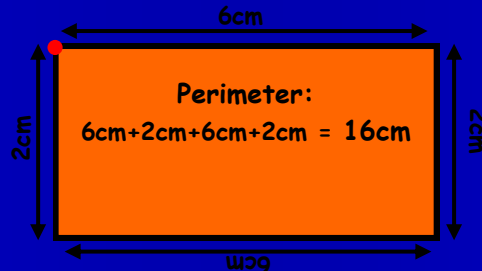


Perimeter Award

The perimeter is the total distance around a 2D shape.

A circle has a special name for its perimeter called the circumference.

Use a small dot so you know where to start and finish counting from.



© 2012 PrimaryClass.co.uk

19 got his/her **NINETEENTH** certificate!!!

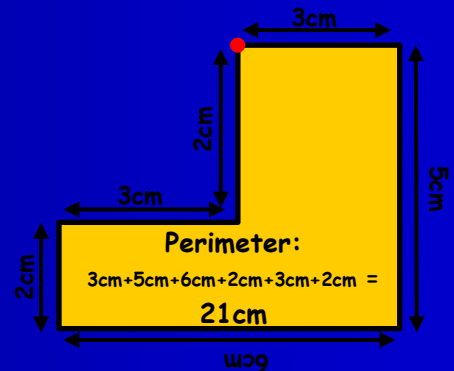
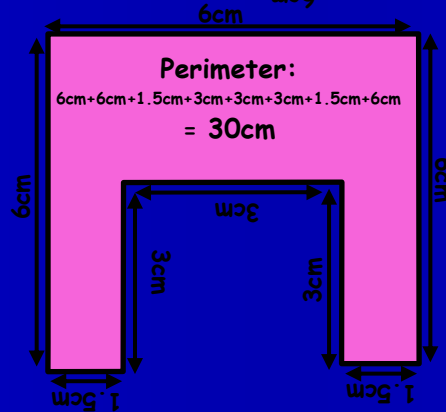
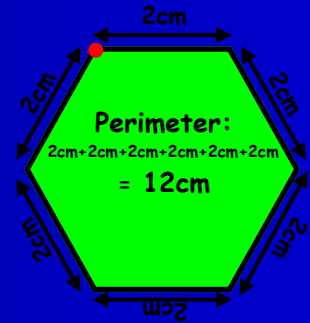
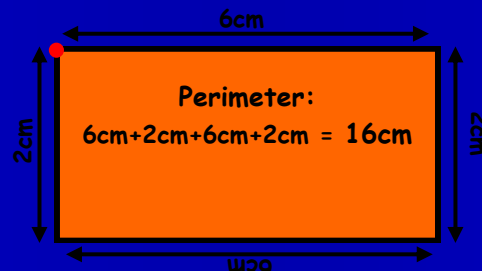


Perimeter Award

The perimeter is the total distance around a 2D shape.

A circle has a special name for its perimeter called the circumference.

Use a small dot so you know where to start and finish counting from.



© 2012 PrimaryClass.co.uk

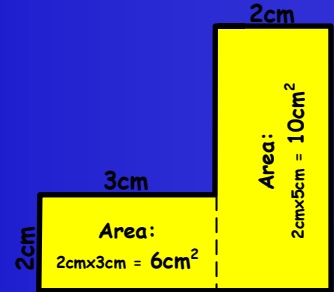
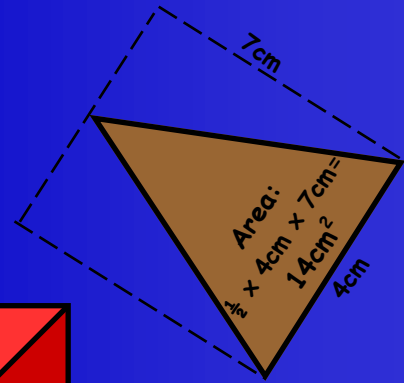
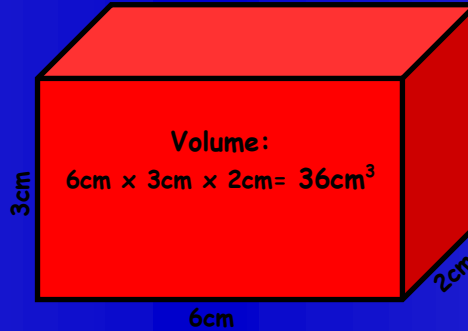
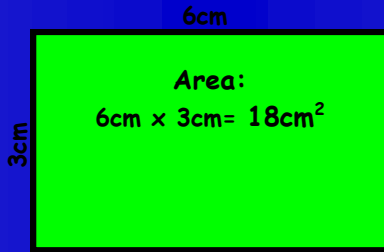
19 got his/her **NINETEENTH** certificate!!!



Area Award

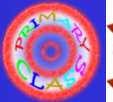
The area is the space covered by a 2D shape. Depending on the shape there are different ways to work it out. For rectangles, times the width by the height. For triangles do the same, but half the final answer.

Volume is the space used by a 3D shape.



Total Area:
 $6\text{cm}^2 + 10\text{cm}^2 = 16\text{cm}^2$

© 2012 PrimaryClass.co.uk

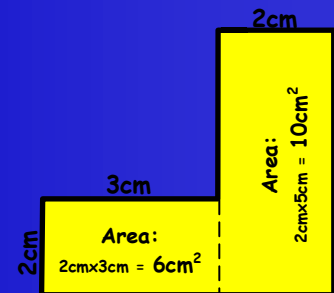
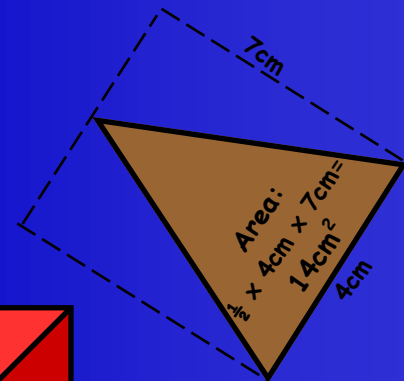
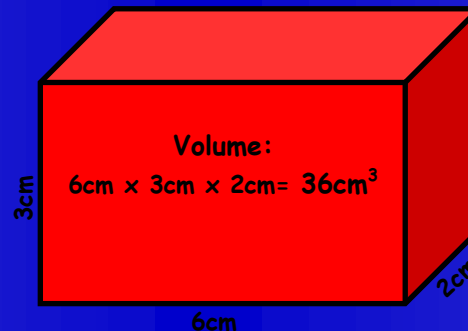


20 got his/her TWENTIETH certificate!!!

Area Award

The area is the space covered by a 2D shape. Depending on the shape there are different ways to work it out. For rectangles, times the width by the height. For triangles do the same, but half the final answer.

Volume is the space used by a 3D shape.



Total Area:
 $6\text{cm}^2 + 10\text{cm}^2 = 16\text{cm}^2$

© 2012 PrimaryClass.co.uk



20 got his/her TWENTIETH certificate!!!

